



Developing an Analysis Services 2012 Tabular Project BI Semantic Model

Queensland SQL Server User Group

15 December, 2011

Presenter Introduction

- Peter Myers
- Mentor, SolidQ
- BBus, MCITP (Dev, DBA, BI), MCT, MVP
- 14 years of experience designing and developing software solutions using Microsoft products, today specializing in Microsoft Business Intelligence
- Based in San Francisco
- pmyers@solidq.com

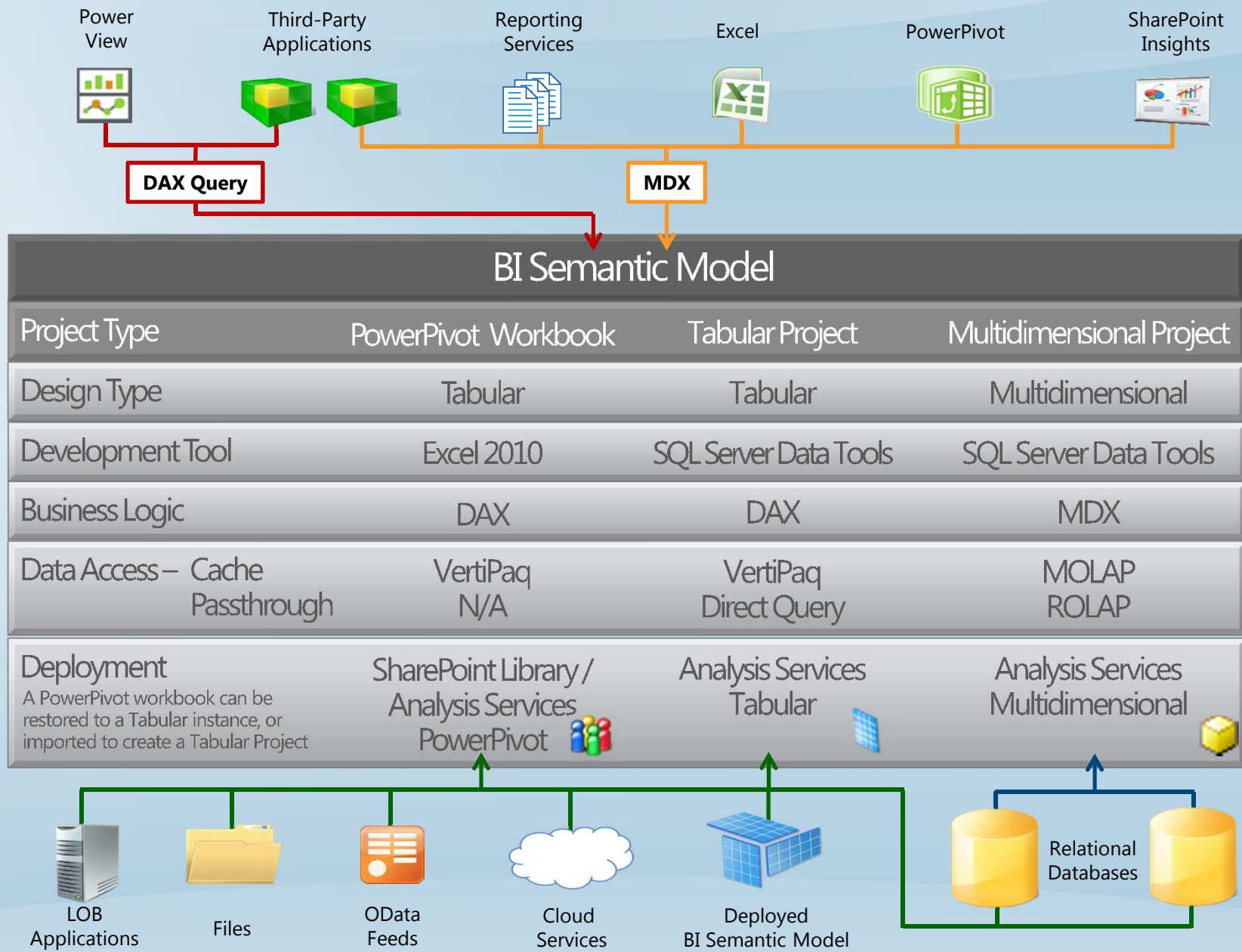


Agenda

- SQL Server Analysis Services 2012
 - Introducing the BI Semantic Model
- Developing Tabular Models
- Managing Tabular Models
- Demonstration
- Resources

SQL Server 2012 Analysis Services

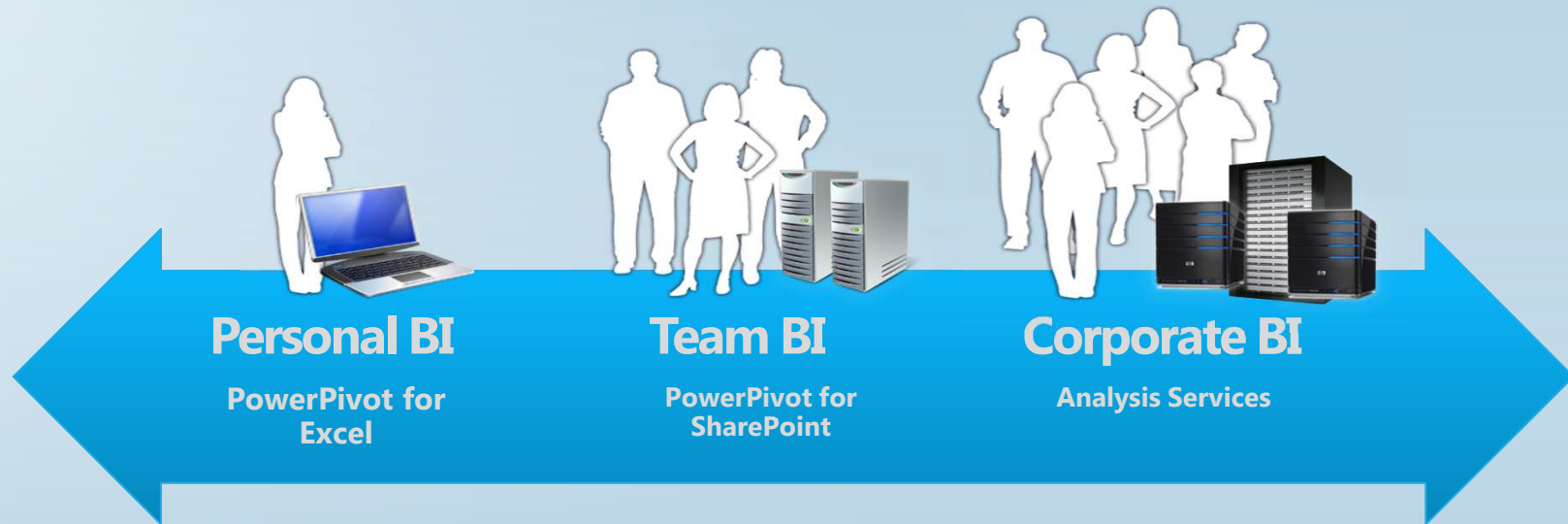
- From strength to strength, SQL Server 2012 (formerly Code Name "Denali") will deliver the fifth release of Analysis Services
- New features and enhancements are based on:
 - A vision to expand data model development to a broader user base
 - Embracing the tabular data model, as introduced in SQL Server 2008 R2 with PowerPivot
 - Unifying tabular and multidimensional models under a single platform – the BI Semantic Model



Introducing the BI Semantic Model

Continued

One Model For All End User Experiences



Developing Tabular Models

PowerPivot Workbook and Tabular Project

- New features include:

- Diagram view
- Calculation area
- Active/inactive relationships
- Marking date tables and columns
- Sorting a column by a different column
- Multi-level hierarchies
- Binary columns (useful for images)
- DistinctCount measure aggregation

- Column and measure format properties
- Table, column and measure descriptions
- Key Performance Indicators
- Perspectives
- Reporting properties

- Importing from PowerPivot
- Importing from (tabular) server
- Table partitions
- Security roles (row-level security)
- VertiPaq and DirectQuery modes

Managing Tabular Models

- New features in SSMS include:
 - Restoring from PowerPivot workbooks
 - Managing connection strings
 - Adding and managing table partitions
 - Adding and managing Roles
 - Processing the database, its tables and table partitions
 - Scripting the database, specific objects and commands

Demonstration



Developing a Tabular Project BI Semantic Model

1. Creating a Tabular Model Project
2. Importing Data and Creating Relationships
3. Enhancing the Model Interface
4. Defining Measures and a KPI
5. Analyzing the Model in the Excel Client
6. Defining Perspectives, Partitions and a Role
7. Deploying and Managing the Model

Resources

- SQL Server 2012 RC0
 - <http://microsoft.com/download>
- TechEd North America 2011 – Session recording
 - DBI206: What's New in Microsoft SQL Server Code-Named "Denali" for SQL Server Analysis Services and PowerPivot
 - <http://channel9.msdn.com/Events/TechEd/NorthAmerica/2011/DBI206>
- TechNet - Feature by Server Mode or Solution Type (SSAS)
 - [http://technet.microsoft.com/en-us/library/hh212940\(SQL.110\).aspx](http://technet.microsoft.com/en-us/library/hh212940(SQL.110).aspx)
- Analysis Services Team Blog
 - <http://blogs.msdn.com/b/analysisservices/>
- PowerPivot Team Blog
 - <http://blogs.msdn.com/b/powerpivot>

Thank you!

